

TB32

Truck beam load cell



Nickel plated Truck beam load cells

- *Capacities from 10,000 lb to 75,000 lb*
- *35 ft 4 wire cable*
- *Nickel plated construction*
- *Interchangeable with Sensortronics 65058*
- *For use with truck scales*
- *Available with optional mounting assembly*



Totalcomp

Scales & Components

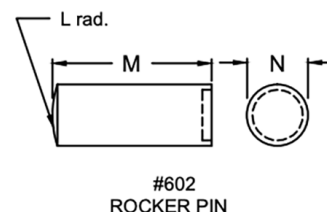
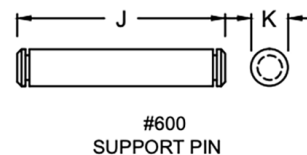
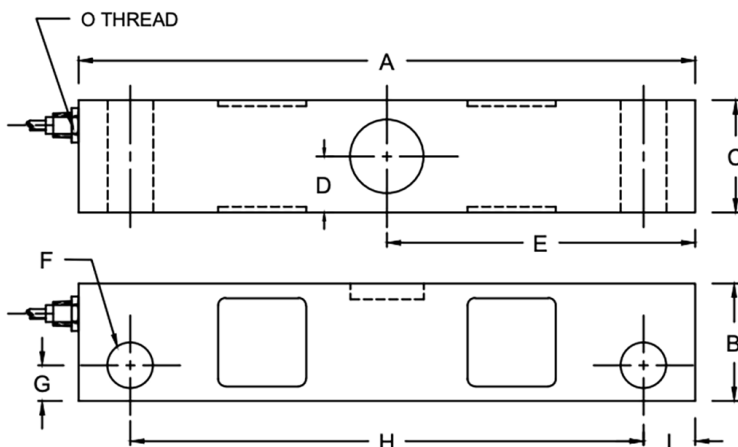
13-01 Pollitt Drive Ext, Fair Lawn NJ 07410
Phone 201-797-2718 Fax 201-797-2287

email: sales@totalcomp.com

Specifications

TB32

The Totalcomp TB32 load cells are interchangeable with Epelsa STR (LC32) double ended beam load cells. They are built to meet or exceed all manufacturers specs for this type of cell. They are constructed of nickel plated steel for washability and protection from harsh environments.



RATED CAPACITY	DIMENSIONS														
	A	B	C	D	E	F	G	H	I	J	K	L	M	N	O
40K-50K	10.50	2.00	1.91	0.95	5.25	0.78	0.61	8.75	0.88	-	-	-	-	-	1/2-14 NPT
#600 Support Pin	-	-	-	-	-	-	-	-	-	4.25	0.75	-	-	-	-
#602 Rocker Pin	-	-	-	-	-	-	-	-	-	-	-	12.00	3.25	1.25	-

Part Number	Capacity	Weight	Stock
TB32-40K	40,000 lb	14 lb	1709
TB32-50K	50,000 lb	14 lb	1710

Performance

Full Scale Output	3.00 mv/v
Combined error	0.03% FS
Nonlinearity	0.03% FS
Hysteresis	0.02% FS
Creep in 30 min	0.02% FS
Non-Repeatability	0.01% FS
Zero Balance	1.0% FS
Overload, Safe	150% FS
Overload, Ultimate	300% FS

Electrical

Bridge Resistance	
Input	700 +/- 10 ohms
Output	700 +/- 5 ohms
Excitation Voltage	10VDC(20VDC Max)
Insulation Resistance	5000Mohms@50VDC

Wiring

60 foot, 4 wire

Temperature

Compensated Range	-10 deg C to +40 deg C
Operating Range	-20 deg C to +60 deg C
Effect on Zero Balance	0.0027% FS/ deg F
Effect on FS Output	0.0015 FS/ deg F

Mechanical

Material	Alloy tool steel
Finish	Nickel plated
Sealing	IP67

Color code

+Excitation	Green
-Excitation	Black
+Output	White
-Output	Red

Totalcomp Limited Warranty

Totalcomp warrants this product to be free of defects in materials and/or workmanship and suitable for the purpose intended as outlined in this sheet. This warranty is effective and shall cover the purchaser for one year from the date of shipment from our plant. If this product is found to be defective by our inspection in accordance with the above listed criteria, we will replace or repair it at our expense. For warranty service, please obtain a return authorization number from us and return the item, shipping prepaid, with a written description of the problem. We will respond promptly with the results of our evaluation.



Totalcomp Scales & Components

13-01 Pollitt Drive Ext, Fair Lawn NJ 07410
Phone 201-797-2718 Fax 201-797-2287

email: sales@totalcomp.com